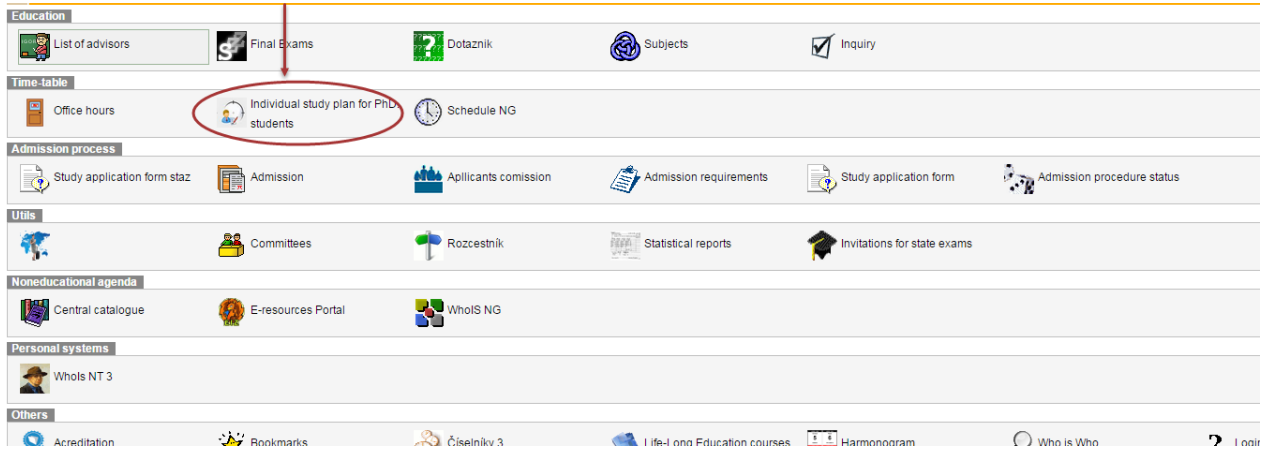
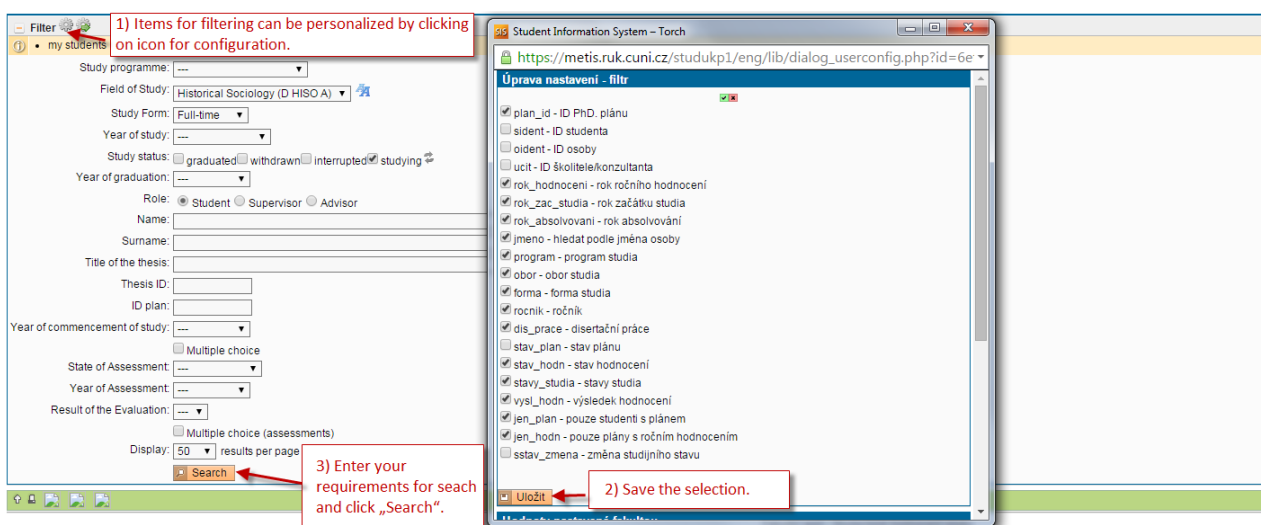


## Operations related to the annual assessment of a doctoral student (PhD) in IS Study (Subject Area Board)

- 1) Once logged in to the Student Information System ([www.is.cuni.cz/studium](http://www.is.cuni.cz/studium)), click the icon “Individual study plan for PhD students”.



- 2) By entering appropriate data to the filter, find the specific student, students of the selected branch etc. (the offer of items for filtering can be personalized).



- 3) The list of students displays the basic information on each student and the relevant annual assessment. For the details on the annual assessment of a specific student, click the icon “Annual Assessment Details”.

Plan	Given and last name	Study status	Year of admission	Supervisor	State of the plan	Responsibility (plan proposal)	Last revision	State of the assessment (SupSAB)	Responsibility (annual assessment)
11558	John Nowak	studying	2015	Mgr. Karel Černý, Ph.D.	approved ISP		15.01.2016 dot. PhD	proposed AA - 2015/2016	Supervisor → Subject Area Board

Results 1 of 1

Unapproved annual assessment is in state of „proposal”. If the responsibility is up to Subject Area Board, your statement is required.

Open assessment

4) The annual assessment form is divided to sections, using the following structure:

Annual Assessment Proposal in PDF form [...](#)

Previous annual assessments of fulfilling the ISP

History of reasons for returning the assessment of ISP

Disertation and progress on the disertation

Type	Title details	Year of insertion
doctoral disertation	The Process of Revolutionary Change in the Middle East From Transformation to Collapse of the whole state structure: A Comparative Study on armed forces	2015/2016
progress on the doctoral disertation		2015/2016

Dissertation details.

Type	Assessed	Who	When	Text of assessment
progress on the doctoral disertation	Student		16.05.2016	test

Course of study

Course of study - optional to fill in, it depends on configuration of each faculty.

List of duties

ID	Type	Code	Title details	Ac. year	Semester	Fulfillment according to student	Fulfillment according to SIS	Commentary on annual assessment	Year of insertion
	Course	YDH4004	Doctoral Seminar II	2016/2017	Winter	Passed	Not-passed	comment	2015/2016
	Course	YDH002	Methods and Techniques of Historical Sociology	2016/2017	Summer	Not-passed	Request: Test		2015/2016
	Course	YDH006	Politics, Power and International Relations in the Perspective of History and Sociology	2018/2019	Summer	Not-passed			2015/2016
	Course	YDH4001	Theoretical Conceptions of Historical Sociology	2015/2016	Winter	Not-passed			2015/2016
	Conference	YDH4001	Conference Berlin	2017/2018	Winter	Not-passed			2015/2016

Enrolled duties and information about status of their completion.

Other commentaries

no data found

Student's comments to each type of duties.

Conclusion of assessment

ID	Type	Assessed	Who	When	Text of assessment	Assessment
	Annual Assessment	Student		16.05.2016	test	-
	Annual Assessment	Supervisor	Mgr. Karel Černý, Ph.D.	16.05.2016	comment...	A

Final student's and supervisor's comments to the annual assessment.

Subject Area Board action:

Select another action (comment, approval etc.)

5) Within the annual assessment, the Subject Area Board also assesses the proposed changes of the plan, and, if appropriate, approves to the removal of required duties from the individual study plan.

List of duties

ID	Type	Code	Title details	Ac. year	Semester	Fulfillment according to student	Fulfillment according to SIS	Commentary on annual assessment	Year of insertion
	Course	YDH4004	Doctoral Seminar II	2016/2017	Winter	Passed	Not-passed	comment	2015/2016
	Course	YDH002	Methods and Techniques of Historical Sociology	2016/2017	Summer	Not-passed	Request: Test		2015/2016
	Course	YDH006	Politics, Power and International Relations in the Perspective of History and Sociology	2018/2019	Summer	Not-passed			2015/2016
	Course	YDH4001	Theoretical Conceptions of Historical Sociology	2015/2016	Winter	Not-passed			2015/2016
	Conference	YDH4001	Conference Berlin	2017/2018	Winter	Not-passed			2015/2016

Dismiss request to remove course.

Approve request to remove course.

Student's comment to request to remove duty from individual study plan.

Other commentaries

no data found

Conclusion of assessment

ID	Type	Assessed	Who	When	Text of assessment	Assessment
	Annual Assessment	Student		16.05.2016	test	-
	Annual Assessment	Supervisor	Mgr. Karel Černý, Ph.D.	16.05.2016	comment...	A

Text of assessment from student and supervisor. / Proposal of assessment from supervisor.

ID	Type	Code	Title details	Ac. year	Semester	Fulfillment according to student	Fulfillment according to SIS	Commentary on annual assessment	Year of insertion
	Course	YDH4004	Doctoral Seminar II	2016/2017	Winter	Passed	Not-passed	comment	2015/2016
	Course	YDH002	Methods and Techniques of Historical Sociology	2016/2017	Summer	Not-passed	Request: Test		2015/2016
	Course	YDH006	Politics, Power and International Relations in the Perspective of History and Sociology	2018/2019	Summer	Not-passed			2015/2016

6) The Subject Area Board may return the annual assessment to the student or the supervisor for completion. The completed assessment must be approved and closed by the Board.

Conclusion of assessment

Type	Assessed	Who	When	Text of assessment
Annual Assessment	Student		16.05.2016	test
Annual Assessment	Supervisor	Mgr. Karel Černý, Ph.D.	16.05.2016	comment...

Subject-area Council action:

Proceed

1) Insert conclusion\* of assessment

2) Approve and Close Evaluation

insert conclusion of assessment  
send the assessment back to the student for correction or amendment  
send the assessment back to the supervisor for correction or amendment  
Approve and Close Evaluation

**Status of annual assessment in academic year 2015/2016**

Academic Year: 2015/2016  
 State: Proposal  
 Responsibility: Subject Area Board  
 Preceding responsibility: Supervisor  
 Change: Mgr. Karel Černý, Ph.D. 16.05.2016

Annual Assessment Proposal in PDF form:

---

**Insert Annual Assessment**

Study status since Study status until  
 studuje 16.09.2015 30.09.2016

Text of assessment: \* comment

Max length 2500 characters, typed 0, 2500 remaining.

Assessment:

Fakultní web | S

7) Approved annual assessment:

assessment closed

**Annual assessment of fulfilling the ISP in academic year 2015/2016**

- Student: Miroslav Vališka (ID: "464447")
- SAB Chair: doc. PhDr. Jiří Šubrt, C.Sc.
- Supervisor (16.09.2015 - 30.09.2015): doc. PhDr. Jiří Šubrt, C.Sc.
- Supervisor (01.10.2015 - stays): Mgr. Karel Černý, Ph.D.
- Advisor (16.09.2015 - stays):
- State of the Plan (ID: "11558")

**States of annual assessment in academic year 2015/2016**

Supervisor: doc. PhDr. Jiří Šubrt, C.Sc. State: Approved  
 Responsibility: Subject Area Board  
 Preceding responsibility: Subject Area Board  
 Change: doc. PhDr. Jiří Šubrt, C.Sc. 16.05.2016

Approved Annual Assessment in PDF form:

Previous annual assessments of fulfilling the ISP

History of reasons for returning the assessment of ISP

Dissertation and progress on the dissertation

Course of study

Title details Year of insertion: 2015/2016

List of duties

Other commentaries

**Conclusion of assessment**

Type	Assessed	Who	When	Text of assessment	Assessment
Annual Assessment	Student		16.05.2016	test	-
Annual Assessment	Supervisor	Mgr. Karel Černý, Ph.D.	16.05.2016	comment...	A
Annual Assessment	Subject Area Board	doc. PhDr. Jiří Šubrt, C.Sc.	16.05.2016	comment...	A